

The background features a dark blue gradient with several large, thin white concentric circles. A target symbol, consisting of concentric white circles with a central orange dot, is positioned in the upper right quadrant. Another similar target symbol is located in the lower left quadrant.

# ***The ultimate in GPS Tracking solutions***

***Save money  
Protect against theft  
Track & manage your fleet***

The logo graphic consists of several concentric white circles with a central orange dot, similar to the target symbols in the background.

**fleetminder<sup>®</sup>**

DEVELOPED IN AUSTRALIA - EXPORTED TO THE WORLD

[www.fleetminder.com.au](http://www.fleetminder.com.au)

# Why choose **fleetminder**?

## EXPERIENCE & INNOVATION

- **fleetminder** has been in the vehicle electronics industry in Australia for over 27 years
- **fleetminder** were the first in Australia to incorporate Google Streetview, live video streaming and advanced Garmin navigation device integration
- The **fleetminder** tracking solution has been developed in-house and both software and firmware can be customised to suit any customer's needs



## RELIABLE HARDWARE & INSTALLATION

- **fleetminder** provides up to 3 years' warranty
- **fleetminder** can organise installation for your devices Australia wide

## FLEXIBLE TRACKING AND PAYMENT OPTIONS

- **fleetminder** offers fully featured *Live Tracking* with 3 or 1 minute log options, or a low cost *Locate on Demand* option for customer who don't need reports or the other features of full tracking
- Acquire the hardware and tracking outright upfront or *Pay by Month* payment plans available

## SECURE CLOUD BASED TRACKING SOLUTION

- **fleetminder** utilises cloud based mapping and reporting software for 24/7 access to data on PC, Mac and smartphones (free Android and iOS App available)
- **fleetminder's** servers, located in Australia, maintain the highest level of security with 256 bit encryption and can handle a very high load to accommodate thousands of vehicles



# **fleetminder** delivers savings and results immediately

## IMPROVE STAFF EFFICIENCY

- Live reporting of asset and vehicle location
- See drivers' whereabouts without contacting them
- Reduce unnecessary and excessive mileage

## IMPROVE CUSTOMER SERVICE

- Compare on-site times with job sheets for accurate invoicing
- Ability to direct nearby driver to a customer in seconds

## IMPROVE OH&S

- Built in panic alarm triggers for staff security
- Reduce vehicle abuse and monitor driver behaviour with over speed alerts, various sensors and ECU data
- Enforce restricted areas with Geofence alerts



## REDUCE WASTAGE AND COSTS

- Save on fuel consumption and vehicle wear and tear
- Reduce unauthorised use of company assets
- Efficiency report provides accurate costings of staff and vehicle travel costs

## RECOVER STOLEN ASSETS AND REDUCE INSURANCE PREMIUMS

- Protect your luxury or performance vehicle
- Instant alerts if vehicle alarm is activated
- Starter motor disable feature - a vehicle can be remotely immobilised via computer or mobile phone



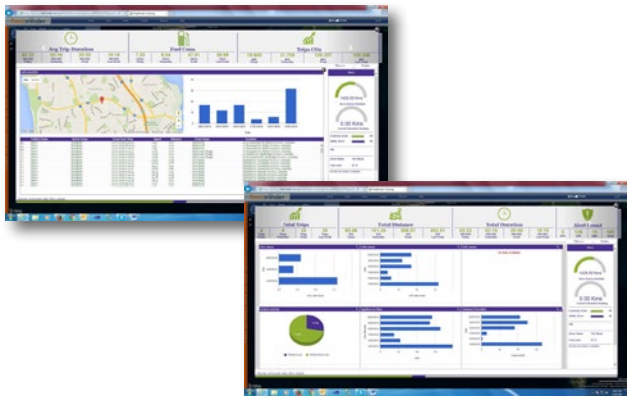
# What can **fleetminder** do for you?

**fleetminder's** tracking platform gives a complete insight into all aspects of your fleet operations. Monitoring and recording of RFID driver ID logs, live engine diagnostics, driver behaviour alerts and reports, routing and messaging - all are immediately available and at your fingertips, using a simple and intuitive interface.



## DETAILED VEHICLE AND DRIVER REPORTS

Apart from mileage and trip reports, fleet managers can access a wide range of online vehicle and driver reports. Reports include: Ignition on/off, Geofence in/out, driver behaviour reports like hard acceleration and braking, speeding reports, over defined RPM and engine management data including CO2 emissions, engine temperature, fuel consumption and oil pressure. Report history is available for up to six months with older data being archived for retrieval if requested.



## ENGINE MANAGEMENT DATA

Not only can fleet managers view logs and history for a vehicle's ECU data, but engine management information can be viewed live, in real time. Speed, RPM, throttle use, oil pressure, coolant temperature and battery level can all be viewed at any time - a very useful tool for driver behaviour assessment. ECU data is stored every 5 minutes and can be retrieved at any time.



## SAFETY FEATURES

**fleetminder** can provide much needed OH&S hardware add-ons such as man-down/lone worker beacons and SOS/panic buttons, as well as data to assist in investigation. **fleetminder's** Accident Re-creation data can piece together data before and after an incident to fully recreate exactly what happened in a vehicle collision. From vehicle's braking to the speed it was travelling, everything you need to see the complete picture.

## FLEET COMMUNICATION

With the Garmin navigation add-on, drivers and fleet managers can communicate easily and effectively. Custom predefined message responses can be set for the driver to reduce distraction whilst driving. Fleet managers can send through new destinations and routes straight to the Garmin device, all via a simple and easy to use interface built right in to the **fleetminder** online portal.



**nxtG V**

## **Metro and Regional GPS/3G/NextG Tracker**

Simple to install, the FM NxtG-V is a compact and discrete tracking module for 24/7 monitoring of cars, vans and trucks using the 3G/NextG network. With added security features such as the ability to remotely immobilize the vehicle or activate an alarm remotely, the FM NxtG-V offers real security for your vehicle. Track via real time web based mapping (subscription required). The FM NxtG-V is ideal for personal or business use in the metro and regional areas.

### **Features**

- Live tracking access and reporting via web browser or the **fleetminder** iOS/Android App
- GSM/3G/NextG network communications
- GPS receiver for live location, speed and direction updates
- Digital and analogue inputs and outputs
- 3 Digital inputs / 2 digital outputs
- Programmable intelligent reporting system (ignition on reporting time/ignition off reporting time)
- Harsh driving/harsh acceleration/crash sensor
- Over-speed reporting
- SOS Panic button
- Backup battery in case of power cuts on main supply
- External GPS antenna
- Simple 3 wire installation
- Integrate to an existing alarm
- Ability to remotely lock/unlock doors, disable the starter motor or sound the alarm
- 24/12v compatible
- Compact size measuring 47mm (w) x 80mm (l) x 26mm (h)



**OBD300**

## **OBD Plug 'n Play GPS/3G/NextG Tracker with ECU Data**

The OBD-300 is a GPS and NextG/3G intelligent on-board diagnostic device compatible with passenger and light commercial vehicles. No installation costs, just plug in to the vehicles OBDII port. Not only does the OBD-300 provide real-time vehicle tracking, but can read diagnostic info from vehicle ECU, speed and RPM data, hard acceleration/braking, mileage and fuel consumption information. The OBD-300 can also alert you if the device is removed by the driver.

### **Features**

- Live tracking access and reporting via web browser or the **fleetminder** iOS/Android App
- OBD II/JOB, J1939 and J1708 compliant
- Plug & Play technology – No additional installation costs
- Real-time tracking via GPS and NextG/3G communications
- Full event reporting and alerts
- Device removal alert
- Unlimited custom Geofence location storage
- Dash mounted panic/SOS button with cable
- Driving behaviour and analysis
- Vehicle maintenance and service logs
- Enhanced dashboards
- Safety and economy scores supported
- Can be used with light or heavy vehicles
- 9-36v compatible
- Optional OBD-II extension cable for remote mounting
- J1939 adapter cable available







## Versatile and flexible NextG Tracking Device

The expandable NextG Pro offers reliable live tracking with a vast array of optional extras, all on the easy to use, fleetminder web based tracking platform.

The NextG Pro is fully customisable to suit your tracking requirements with options including WiFi, Iridium, Garmin Navigation with 2 way communications, CANbus real-time engine data reporting and serial ports programmable to third party hardware such as radios.

### Features

- Live tracking access and reporting via web browser or the **fleetminder** iOS/Android App
- NextG/3G communications - optional WiFi, Iridium
- Reserved Garmin interface (for 2-way driver/base communications)
- Driver behaviour analysis
- Over-speed alerts
- Engine hour calculations
- Digital and analogue inputs and outputs
- G-force Accelerometer
- Vehicle speed and RPM inputs (VSS)
- CANbus interface (J1939 and OBD)
- SOS button
- In-vehicle buzzer

### Add-ons & Accessories

- Garmin car and truck navigation and interface cable
- Temperature sensor
- OBD adaptor
- Dallas key driver ID
- Programmable serial ports
- IP65 waterproof casing
- WiFi and Iridium modems



## Remote Area Iridium/NextG Tracking Device

The Platinum NextG+ offers accurate and reliable live tracking and a vast array of optional extras, all on the same easy to use, comprehensive web based tracking platform. With added Iridium communication you have live coverage anywhere, even in the remote outback. Optional Garmin screens can be added to provide 2-way base and driver communication. Additional features and options include live online canbus providing real time engine reporting; man down rescue and alarm beacon with 1km range from vehicle; crash and harsh braking sensor for driver safety and dangerous driving reports.

### Features

- Live tracking access and reporting via web browser or the **fleetminder** iOS/Android App
- True NextG/3G and Iridium communication
- Reserved Garmin interface port (for 2-way driver/base communications)
- Digital and analogue inputs and outputs
- IP67 Waterproof housing
- Built in tamper switch
- RFID reader (for driver identification)
- Engine hour calculations
- Auxiliary 7 x input controller port
- Canbus interface port
- Wireless RF panic button port
- OTA firmware and settings
- Harsh driving/harsh acceleration/crash sensor port

### Add-ons & Accessories

- Garmin car and truck navigation and interface cable
- Harsh braking/crash sensor
- 7 Input controller
- Wireless RF panic switch
- Temperature sensor
- Fuel level sensor





## Compact GPS Satellite Asset Tracker

Designed for the remote location tracking and protection of fixed and mobile assets, the SM1-C is an inexpensive, reliable solution for a multitude of options including: 12 different reporting times, interval or 24 hour operation mode, alternate reporting schedules and low battery message. Track and secure containers, vehicles, boats and small assets, anywhere, anytime.

Ideal for assets with no or limited power, and no need for 3G/GSM access. The SM1-C can be line-powered, or in the absence or interruption of external power, the SM1-C will automatically switch to battery back-up. Utilising off-the-shelf AAA batteries provides up to 12 months of reporting, can monitor remote sensors, alarms or relays and report activation.

The SM1-C utilises motion sensors, comparative GPS positions and custom configured sensors to gather and transmit asset status information. Each SM1-C is configured to track its asset's specific needs and provide intermediate and emergency alerts by email or text.

### Features

- Live tracking access and reporting via web browser or the [fleetminder](#) iOS/Android App
- Quick installation: Use industrial adhesives, brackets or screw mounts for installation
- Operates on 5v external line power, 8-22v regulator cable or 4x AAA Lithium batteries
- Change of location sensing sends alerts if asset moves outside of pre-determined range
- Messaging reduction mode: Reduced satellite messaging if asset remains in same location for a pre-determined period of time
- Standard messaging: Wake, GPS locate, transmit location, resume sleep
- Theft alert reporting: By alarm or motion. Trigger alert activated by relay, alarm or sensor
- Integrated accelerometer
- Dimensions: 24mm (h) x 70mm (w) x 82mm (l) with bracket



## 3G/GPS Trailer Tracking Device

The TT3G is a high performance and reliable 3G/GPS Trailer Tracking device which has been designed for trailer and machinery GPS location and theft recovery. The internal Lithium Ion battery can transmit for up to 25 days (depending on configuration). The TT3G can be trickle charged via the vehicle's 12 or 24 volt system, off lights or battery.

As the TT3G has an external antenna with 5m cable, the main unit can be mounted in any position or hidden to protect it from weather and thieves. Internal antenna version available.

### Features

- Live tracking access and reporting via web browser or the [fleetminder](#) iOS/Android App
- 3G data communication for live tracking
- Rechargeable Lithium Ion battery with up to 25 days standby time
- Utilises motion sensors and comparative GPS positioning
- Tracking modes:
  - Time interval mode
  - Distance interval mode
  - Smart mode (time, distance and ignition)
  - Idle tracking mode
- Reports:
  - Mileage report
  - Battery level report
  - Battery level indicator in each position report
- Journey logging up to 100,000+ way-points
- Geo-fencing control
- Roaming control
- Customised firmware available (on application)
- Optional magnetic base available
- Internal antenna version available
- Dimensions: 120mm (l) x 80mm (w) x 32mm (h)



**CT3G<sub>51</sub>**

### 3G/GPS Container and Asset Tracker

The CT3G is a high performance and reliable 3G/GPS Asset Tracking device which has been designed for container, trailer or asset GPS location and theft recovery. The CT3G can be configured to report location daily while still providing battery life of up to 3 years.

The CT3G has a built in GPS antenna and no external wires. The optimal design and IP67 rating provides protection against temperature, dust and water. The CT3G is ideal for non-powered assets or any asset requiring minimal battery usage. Its small size allows it to be used on procurement stock.

#### Features

- Live tracking access and reporting via web browser or the **fleetminder** iOS/Android App
- 3G data communication for live tracking
- Up to 3 year battery life (non-rechargeable, replaceable)
- Magnetic base option, or flange mount
- Utilises motion sensors and comparative GPS positioning
- Tracking modes:
  - Time interval mode
  - Distance interval mode
  - Idle tracking mode
  - Low battery level mode
- Reports:
  - Mileage report
  - Battery level report
- Power low/internal battery alarm
- Journey logging up to 100,000+ way-points
- Geo-fencing control
- Can be re-configured over-the-air to change reporting intervals



**Mvt3G<sub>7</sub>**

### 3G/GPS Magnetic Container and Asset Tracker

The MVT-3G container tracker utilise GPS and NextG/3G functions in one unit and is capable of transmitting periodic data at set intervals. Using strong magnets for easy installation. Track location, speed and direction in real time or periodic logged data can be accessed on web based mapping.

The MVT-3G7 is easily programmed for specific requirements. Changes to the MVT-3G7 setup can be done by sending SMS commands to the module. The rechargeable internal battery that can last up to 30 days when transmitting data. The MVT-3G7 also has a tamper switch which will send a report if the device is removed.

#### Features

- Live tracking access and reporting via web browser or the **fleetminder** iOS/Android App
- 3G data communication for live tracking
- Rechargeable battery with up to 30 days life
- Magnetic base for simple installation
- Utilises motion sensors and comparative GPS positioning
- Reports:
  - Mileage report
  - Location report
  - Geofence report
- Power low battery alert
- Journey logging up to 100,000+ way-points
- Geo-fencing control
- Superior Power Management
- Can be re-configured over-the-air to change reporting intervals





## MDVR - Video Streaming, Recording and Tracking

The mobile DVR (MDVR) is a cost effective, multi-functional recording device with the ability to transmit live streaming video, tracking, GPS and other vehicle (or asset) data. Record and transmit crucial transportation video for security and safety applications. Able to connect up to 4 (MDVR4) and 8 (MDVR8) cameras for front, side and rear video footage. Includes 1Tb Hard Drive (optional 32Gb back-up SD card available).

### Features

- Video & audio synchronous real-time recording and playback
- Available in 4 or 8 video channel models
- A choice of 1Tb or 2Tb hard drive
- Streams audio on all channels (subscription required)
- Removable 2.5 inch HDD (supports max 2Tb).
- SD card for backup recording & data mirroring
- 3G communication for vehicle tracking and viewing of video and other data
- Built-in GPS module
- Built-in G-sensor to monitor crashes, harsh braking/accelerating
- 8 digital alarm inputs, 2 digital outputs
- Wi-Fi data download to your server when in range
- Three RS485 interfaces, one RS232 interface
- Compatible with RCA/BNC type connector cameras
- 12V power output (max 3A) to power cameras and small LCD screen(s)



## TRACKING OPTIONS

Locate On Demand	Gives current location of vehicle only (no access to reports or history) No limit on number of "Locate my Vehicle" commands Device must be powered to send/receive commands Access via a web browser or iOS/Android App
Live Tracking	Shows vehicles' full journey with access to reports and up to 6 months history 3 minute or 1 minute logs of vehicle data Full access to notifications and alerts If vehicle is stolen, can see last known location No limit on number of reports Access via a web browser or iOS/Android App

## REPORTS

Replay A Day Activity Idle/stop time Trip Mileage Driving Time ECU data	Over-speed Customer Site Geofence Economy Analysis Safety Analysis Service History Maintenance schedule
---	---

## NOTIFICATIONS & ALERTS

Geofencing	Be notified of out of authorised zones
Speed	Be notified of pre-defined speeding
Tow-away	Be notified of unauthorised tow-away
Low Voltage	Be warned of low voltages
Unauthorised Use	Be notified of activated alarm
Duress Alarm	Be notified of panic alarm activation

## NOTIFICATION CONTROL FEATURES

Controllable Inputs	Digital inputs: Ignition trigger Alarm trigger.  Analogue inputs: Optional temperature sensor Optional fuel sensor
Controllable Outputs	Disable starter motor Unlock/lock doors Sound siren Pulse fuel pump etc.
Communication channels	SMS Email

	MVT3G	CT3G	TT3G	SM1-C	OBD300	NxtGV	NxtG+	NxtG-Pro
Type	Asset	Asset	Trailer	Asset	Vehicle	Vehicle	Vehicle	Vehicle
Modem	3G	3G	3G	Satellite	3G	3G	3G	3G
Iridium/Globalstar	-	-	-	Globalstar	-	-	Iridium	Optional Iridium
GARMIN	-	-	-	-	-	-	YES	YES
Locate On Demand	-	-	YES	-	YES	YES	YES	YES
Inputs	-	-	3	2	OBD	3	2	5
Outputs	-	-	2	-	-	2	7	3
Crash Sensor	-	-	-	-	YES	YES	YES	YES
Panic Button	-	-	-	-	YES	YES	YES	YES
ECU Data	-	-	-	-	YES	YES	YES	YES
Battery*	30 Days	3 Years	25 Days	1 Year	-	-	-	-

\*Battery life is an estimation only and depends on operating environment such as GPS signal, 3G coverage or temperature as well as reporting/logging period.



## **Fleetminder Head Office**

4/50 Jersey St, Jolimont WA 6014

PO Box 1469 Subiaco WA 6904

Phone: 1300 1 FLEET (1300 135 338)

Email: [admin@neltronics.com.au](mailto:admin@neltronics.com.au)

[www.fleetminder.com.au](http://www.fleetminder.com.au)

Authorised **fleetminder** dealer: