

Fleetminder PT3

User Manual



TABLE OF CONTENTS

1. Warning.....	3
2. Welcome	4
3. Introduction and Features.....	5
3.1 Introduction.....	5
3.2 LED Indicators	6
4. Device Operation	7
4.1 Device charging.....	7
4.2 SIM card Installation	8
4.3 Power	9
4.4 Emergency button.....	10
5. Contact Information.....	11
6. Safety Information	11
7. Limited Warranty.....	12

1. Warning



USE RESPONSIBLY. READ ALL INSTRUCTIONS AND SAFETY INFORMATION BEFORE USE.

Fleetminder, will not accept any responsibility whatsoever for accidents or violations of local Laws resulting from failure to observe common sense precautions and local laws. Your personal judgment, traffic regulations, and common sense must always take precedence over any directions produced by GPS receiver or the mapping software.

Indemnification:

User agrees to defend, indemnify and hold harmless Fleetminder, its officers, directors, employees and agents against and from any third party claims, actions, damages or demands, including but not limited to, reasonable legal and accounting fees, resulting from user's use or misuse of this product, violation of these Terms, or any activities related to this product, or from user's violations of the rights of any other user of this product. Use of this Product is at user's own risk.

2. Welcome

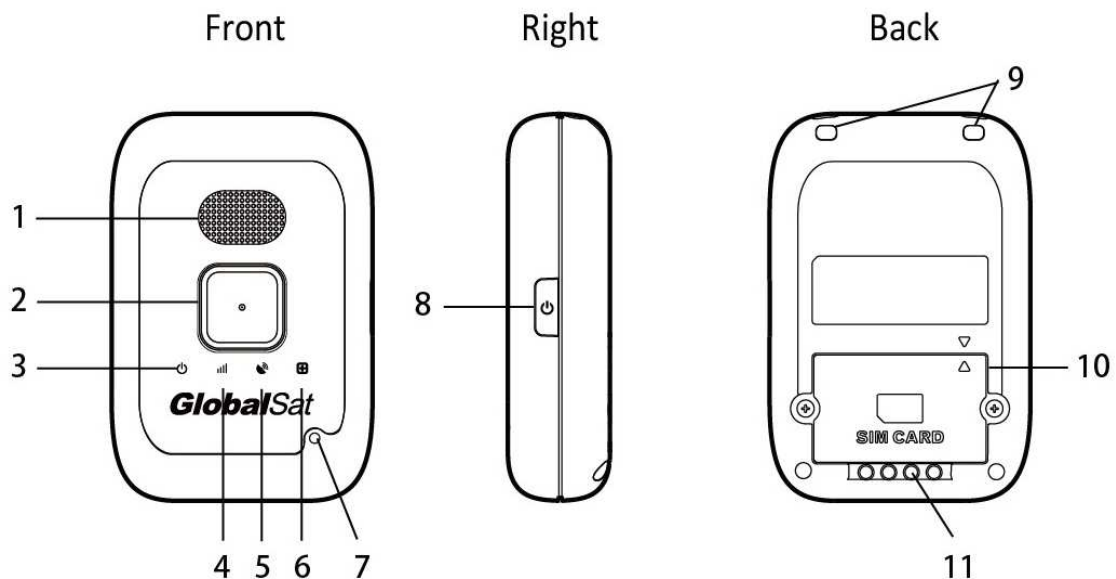
Thank you for purchasing the Fleetminder PT3. The PT3 is a sleek, compact and feature rich Personal / Personnel tracking device. In addition to its telemetry abilities, the PT3 unit incorporates a wide array of custom feature, functions and configurations for unique client requirements. PT3 is a versatile device which can be used for many Personal & Personnel tracking applications. We appreciate your purchase of a Fleetminder Product!



3. Introduction and Features

3.1 Introduction

PT3 is a 3G personal tracking device with fast GPS acquisition time. It is compact, portable and stylish in design capable to connect both GSM and GPRS wireless networks. Users can easily and remotely configure PT3 and display GPS locations on remote monitoring / tracking platforms.



1	Speaker
2	Emergency Button
3	Power Status LED
4	GSM Status LED
5	GPS Status LED
6	Bluetooth Status LED

7	Microphone
8	Power Button
9	Lanyard Holes
10	SIM Card Compartment
11	Battery Charging Contacts

3. Introduction and Features (Continued)

3.2 LED Indicators

Power Status LED



LED	Orange Constantly Lit	Red Constantly Lit	Red Blinking Quickly
State	PT3 is being charged.	Battery power is low	USB configuration mode

GSM LED



LED	Blinking Quickly (Once every 200 millisecond)	Constantly Lit	Blinking Slowly (Once every 1 seconds)
State	1. Data transmitting.	1. PT3 is searching for GSM network 2. No SIM card inserted	1. In Standby Mode, network already registered.

GPS LED



LED	Blinking Quickly (Once per second)	Blinking Slowly (Once every 3 seconds)
State	PT3 is searching for GPS fix	PT3 receives GPS fix

Wireless LED (Optional function)

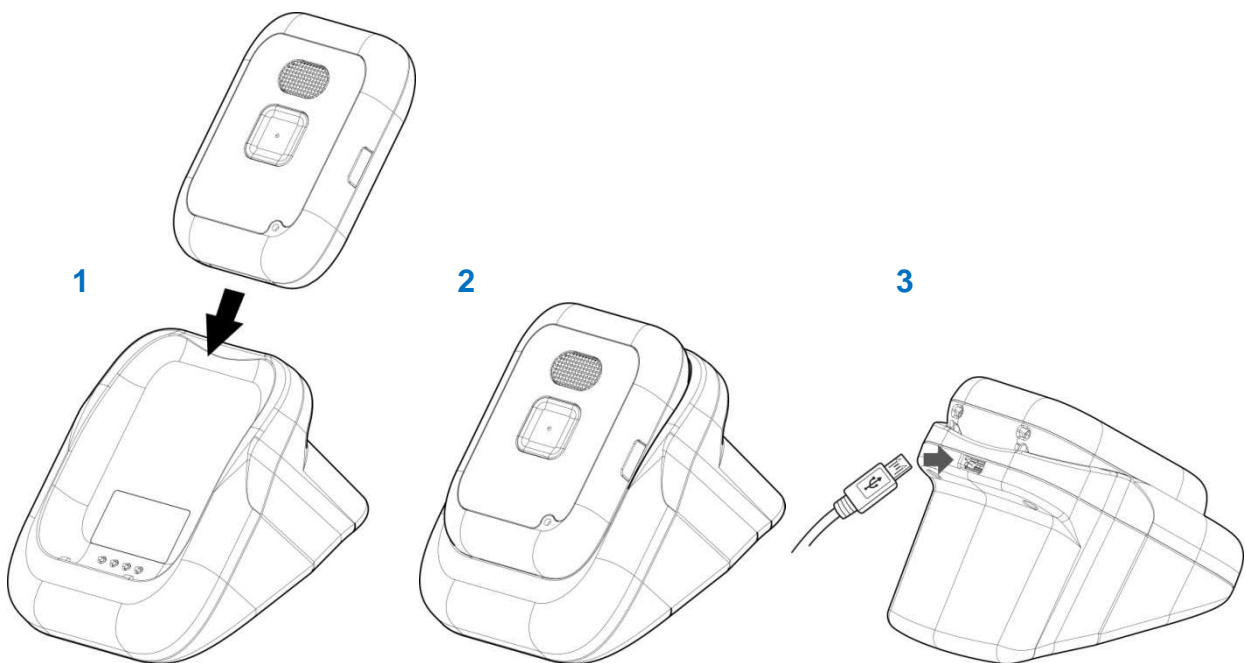


LED	Blinking Quickly	Blinking Quickly (Once per second)
State	Standby mode	Connecting to Bluetooth device

Note: The PT3 Wireless-enabled devices must be an authorized and pre-integrated PT3 accessory in order to connect, not all BLE devices will connect without pre-integration.

4. Device Operation

4.1 Device charging

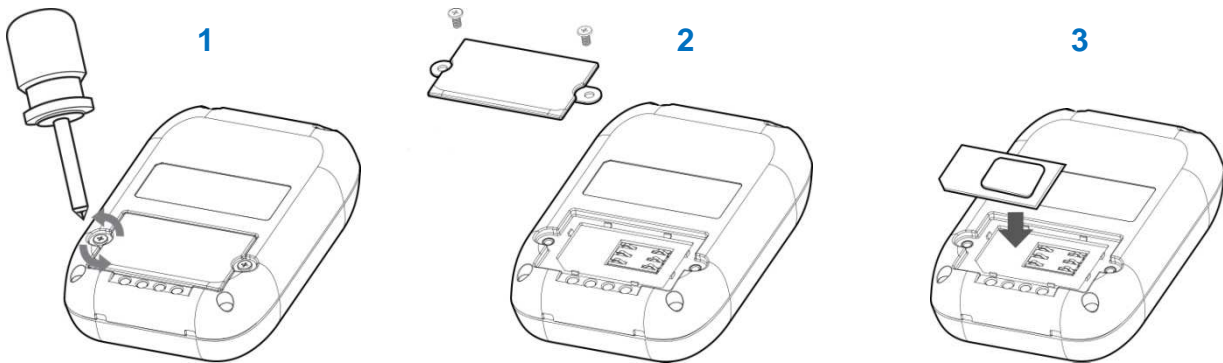


Using the device for the first time, rechargeable battery will require a complete 100% charge before PT3 is operable. To maximize your device's battery life, proceed by performing the steps listed below.

1. Place the device on the charging cradle.
2. Connect the Micro USB side of the cable to the cradle port and connect the other end of the cable to the designated AC power source (USB/AC adaptor).
3. Allow at least 6 hours of battery charging time.

4. Device Operation (Continued)

4.2 SIM Card Installation

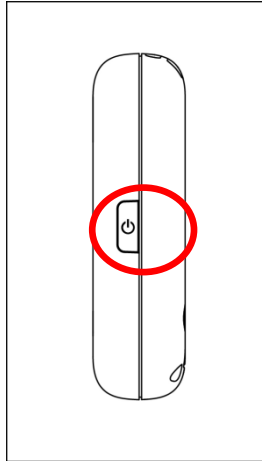


1. Unscrew the SIM card cover.
2. Remove the cover.
3. With the metal contacts facing down, with the notch of the SIM card positioned to your lower left side as seen in the above #3 image, place the SIM card onto the SIM card compartment.
4. Replace the back cover in its original compartment and re-screw the cover.

Note: Before installing or taking out the SIM card, please power off the device.

4. Device Operation (Continued)

4.3 Power



1. To turn the device “ON”, press and hold the power button for 1 second.
2. To turn the device “OFF”, press and hold the power button for 3 seconds until the device vibrates.
3. To perform a hard reset, press and hold the power button for 8 to 10 seconds.
4. For developers accessing COM port connection from the device, press the power button once quickly while the device is sitting on the cradle with the USB cable connected to PC.

4. Device Operation (Continued)

4.3 Emergency button



1. While pressing and holding the emergency button, PT3 will send the emergency SMS messages to pre-programmed phone numbers and continuously dial out to these phones numbers until one phone call is picked up. Call rotary.
2. Once the emergency call is answered, the user and the contact may speak through the hands-free speakerphone.
3. By default PT3 allows the user to end a call by pushing the emergency button once.
4. Users may also answer incoming phone calls by pushing the emergency button once when PT3 exhibits ring tones.

Note: .Please contact Technical Support for programming emergency phone numbers.

5. Contact Information

Fleetminder

Address: 4/50 Jersey St, Jolimont WA 6014

TEL: +61 08 9383 7833

6. Safety Information

- Please consult your airline prior to the operation of this product in the aircraft. . Operating this product in environments emitting intensive radio waves or radiation can affect the operation and functionality of this product.
- Avoid use in humid or rainy environment. Water ingress can disable or destroy this product beyond repair.
- Avoid using this product in a dusty environment. Dust ingress can compromise the products ability to function.
- Avoid situations that include Over-voltage, over charging, power cable damage may cause overheating or potential fire disaster.
- Never use any chemical or detergent to clean the Personal Tracker to prevent erosion of the surface or paintwork.
- In order to eliminate the risk of electric shock, make certain the charging cable is completely inserted / seated, do not touch the power cable plug / connectors with wet or damp hands.
- Do not charge the Device in any extreme cold or hot temperatures, which may cause damage to the device.
- Keep out of the reach of children during charging.
- Avoid direct prolonged exposure to sunlight and high temperatures to avoid the potential over-heating of the battery of this product, which may cause damage.
- Please do not attempt to repair this device yourself, contact Globalsat or USGlobalSat for Technical Support.
- Keep all the wires tidy in order to prevent damage or tangling.