

Required Information:

- Invoice
- Company Details
- Username
- Password
- APN
- Sending interval
- Accessories required

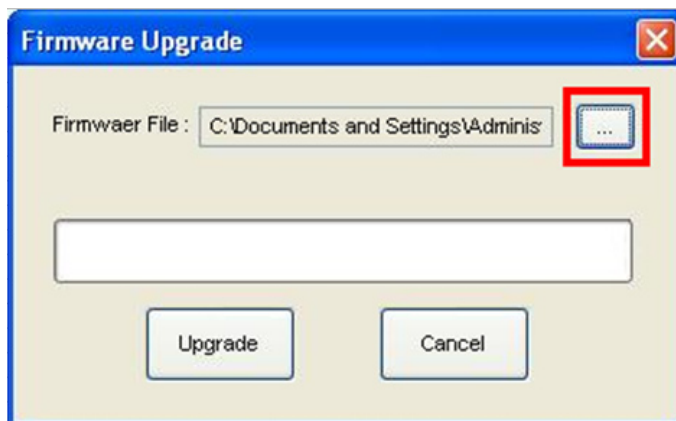
Device Provisioning

THE DEVICE ID WILL BE PROVIDED TO YOU UPON REQUEST.

1. ☐ Insure the correct Upgrade cable is plugged into the **SERIAL-COM port 1**
2. ☐ Open **Next G Icon** on Desktop.
3. ☐ Plug in NEXT G loom and programming port into unit.
4. ☐ Click on **Yellow Icon (FIRMWARE UPGRADE)**



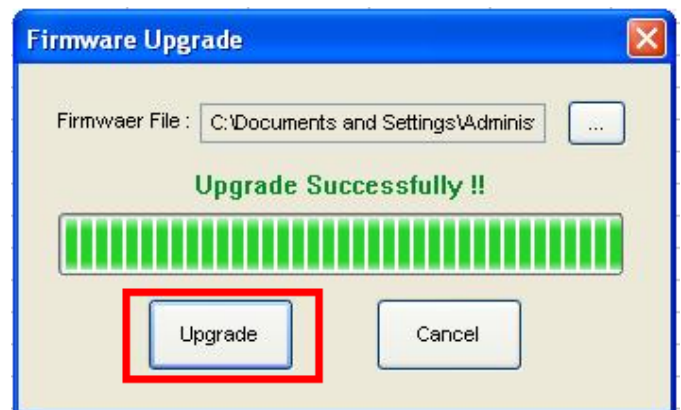
5. ☐ Once the new window opens, select **OPEN** as in this image.



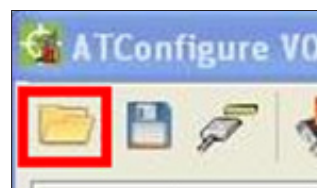
6. ☐ Select the firmware **version 1.14** in "**desktop/Config/NextG.Firmware**"



7. ☐ Click "**Upgrade**" and wait for "**Upgrade Successfully!!**"



8. ☐ Click "**Cancel**" once the upgrade is finished.
9. ☐ Click on **Open** from the main panel.



10. ☐ Select "**settings1.atf**" from "**desktop/Config/NextG/Settings**"
11. ☐ Open successfully will appear. Select **OK**.

12. ☐ From the config software, select **UnitID** and input the new ID.



13. ☐ Click **Upload** (RED ARROW).

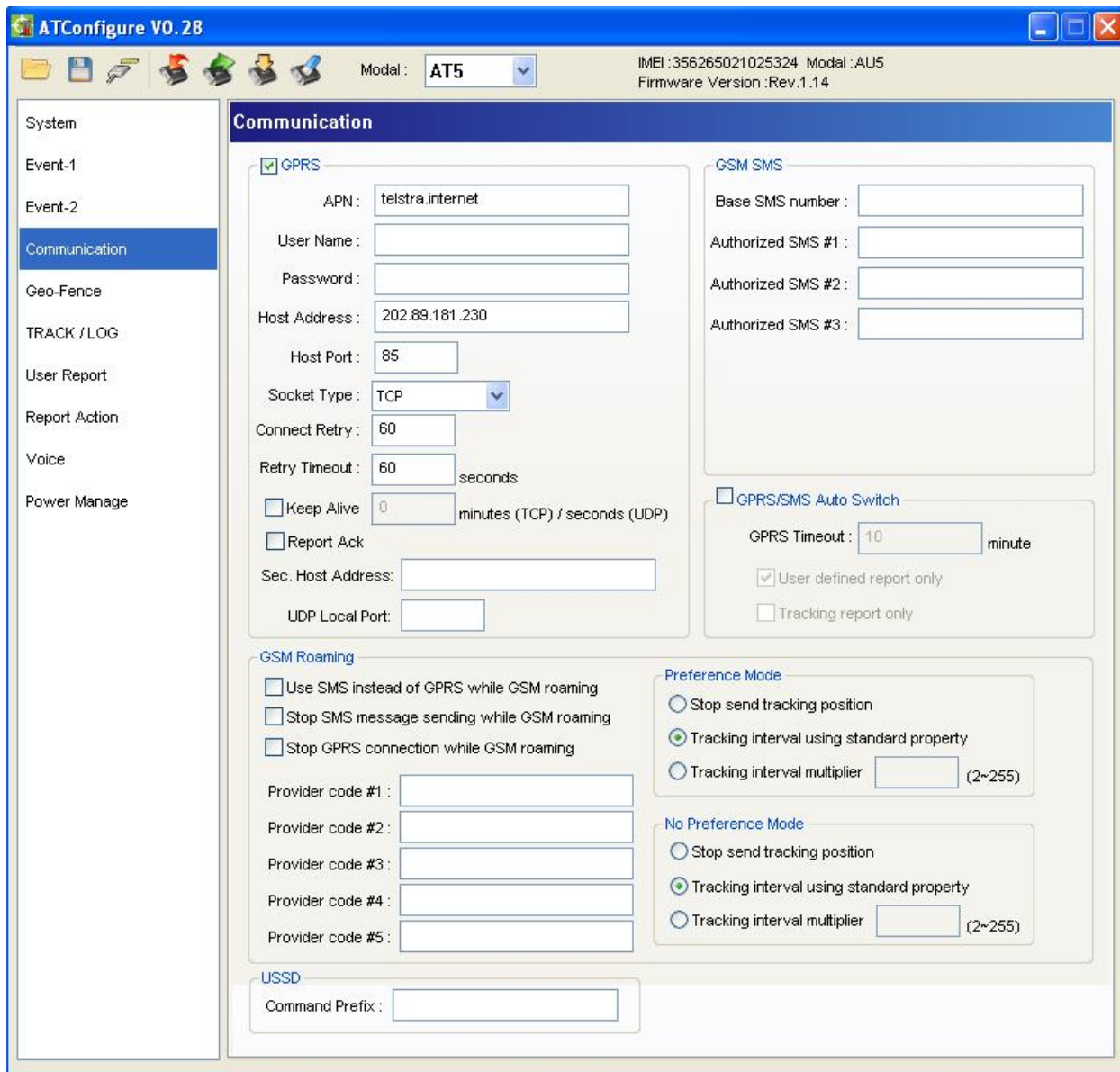


14. ☐ Wait until settings are loaded, then Verified, dialog box will disappear.

15. ☐ Click **Query Icon** (GREEN ARROW).



16. ☐ CHECK THAT ALL SETTINGS ARE CORRECT.



17. ☐ Unplug the device, and close the software if there is no other units to set up.

18. ☐ Repack in box, and fill in checklist (pc and paper).