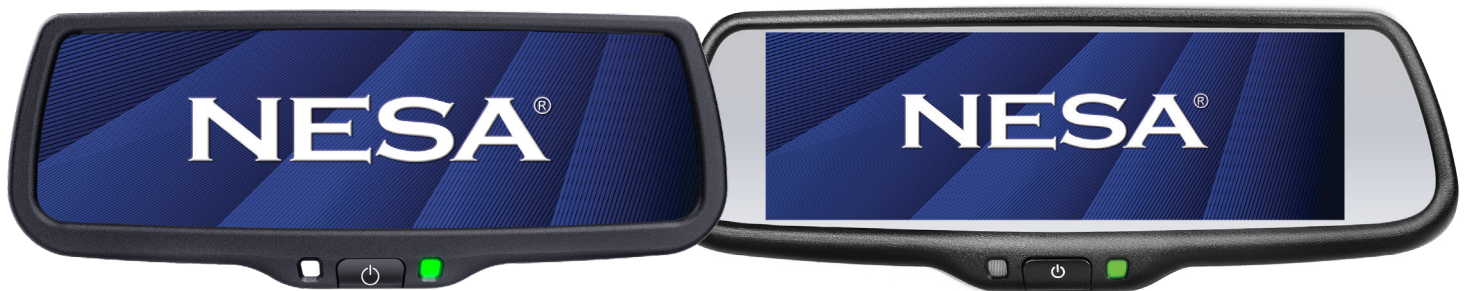


NESA®

MIRROR BRACKETS & ADAPTERS



NESA Mirror Brackets and Adapters Compatibility:

Current models:

NSR-73AHD & NSR-74AHD

Discontinued models:

NSR-73R, NSR-43R & NSR-43LAD

NESA mirrors come with **BR01** OEM mirror mount (shown in image below). This mount is the most common mount in cars on the Australian market.

This catalogue lists our brackets and adapters for the most common vehicles and models for the Australian market. If your vehicle is not listed, contact us and we can help to identify the correct part number.

If the image of a bracket or adapter does not match the one you are replacing, send a photo of your bracket/ adapter to admin@neltronics.com.au

BR# : NESA mirror adapter plate replacement - uses the supplied bracket arm

BRF# : NESA mirror full bracket replacement - replaces the bracket arm



BR# Adapter Plate



BRF# Full Bracket



The included BR01 bracket fits the following vehicles:

(Some model variants or years may vary)

Toyota	Landcruiser, Hilux, Prado, Corolla, Rav 4, Prius
Mitsubishi	Triton, Pajero, Outlander, Lancer, ASX
Mazda	CX7, CX5, Mazda 6, Mazda 5, MX-5
Hyundai	iLoad, Santa Fe, iX, Tucson, Veloster, Sonata
Kia	Sorento, Sportage, K Series
Nissan	Qashqai, Tiida, Murano, X-Trail
Honda	Odyssey, CR-V, Civic, Accord
Ford	Mondeo, Ecosport, Explorer, Fiesta, Focus
Holden	Astra, Captiva, Cruze, Epica, Malibu, Spark
Suzuki	Vitara, Swift
Great Wall/GWM	Most models
Jeep	Grand Cherokee, Patriot, Compass
Dodge	Calibre
Chev	Camaro
Buick	2014-2015
Cadillac	2016
Chrysler	C300
GAC	GA 3, 5, 6
SAIC	G10
Geely	Emgrand GS, GS6
ZXAUTO	C3, CX3, Grand Tiger, TUV, G3

4WD's & Utes

Check images if multiple parts numbers are listed as years/variants can differ

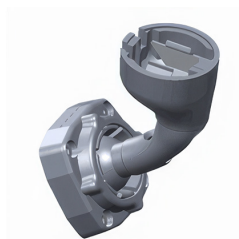
Make/Model	Bracket/Adapter Part Number
Ford Ranger	BRF76, BRF78, BRF100
Ford Raptor/XLT	BRF77
Ford Everest	BRF100
Toyota Hilux	BR01
Isuzu D-Max	BRF190
Great Wall GWM	BRF54, BRF58
Mazda BT50	BR01
VW Amarok	BR03, BRF3A, BRF67
Mitsubishi Triton	BR01
Toyota 79 Series	BRF80
Toyota 100 Series	BRF129
Toyota 200 Series	BRF118
RAM	BRF70
Kia Tasman	BR01



BR01



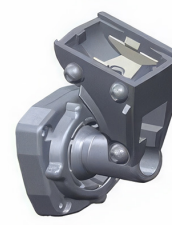
BR03



BRF3A



BRF54



BRF58



BRF67



BRF70



BRF76



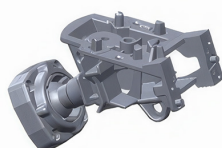
BRF77



BRF78



BRF80



BRF100



BRF118



BRF129



BRF190

Vans

Check images if multiple parts numbers are listed as years/variants can differ

Make/Model	Bracket/Adapter Part Number
Mercedes Sprinter	BR35, BR42, BRF27
Mercedes Vito	BR35, BRF12
Iveco Daily	BR35, BRF71
Ford Transit	BRF48, BRF77, BRF78
Hyundai iLoad	BR01, BR07
Renault Master/Kangoo	BRF13
Toyota Hiace	BR01
Toyota Coaster	BRF08, BRF80

Trucks

Make/Model	Bracket/Adapter Part Number
Hino	BRF43
Daihatsu	BRF110
Fuso	BR07
Iveco	BR35



BR01



BR07



BR35



BR42



BRF08



BRF12



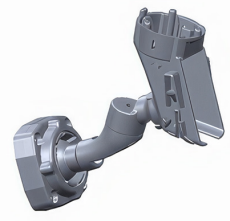
BRF13



BRF27



BRF43



BRF48



BRF71



BRF77



BRF78



BRF80



BRF110

European Cars

Check images if multiple parts numbers are listed as years/variants can differ

Make/Model	Bracket/Adapter Part Number
Porsche	BRF11, BRF30, BRF40
Mercedes/ Renault	BR42, BRF21, BRF108
Mercedes C/E/G Class	BR49, BRF49, BRF37
Opel	BR46
Audi	BRF3A, BRF10, BRF22
BMW X5/Z4	BRF11, BRF187
BMW	BRF11, BRF23
Land Rover/Range Rover	BRF11, BRF31, BRF34
Fiat	BRF33
VW	BR42, BRF27, BRF44, BRF57, BRF75



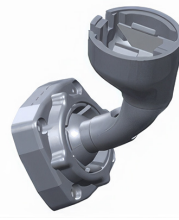
BR42



BR46



BR49



BRF3A



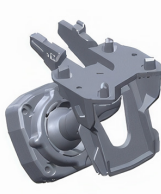
BRF10



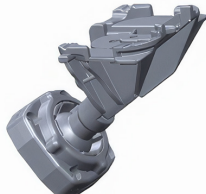
BRF11



BRF21



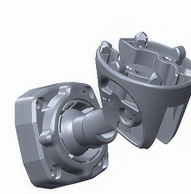
BRF22



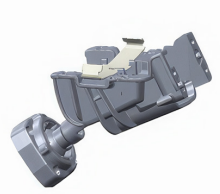
BRF23



BRF27



BRF30



BRF31



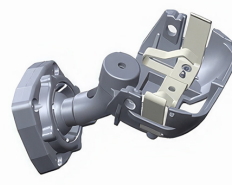
BRF33



BRF34



BRF37



BRF40



BRF44



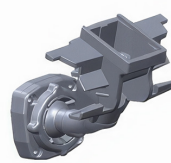
BRF49



BRF57



BRF75



BRF108



BRF187

Rear View Mirror with 7.3" HD Touchscreen Reverse Monitor NSR-73AHD



OEM style rear view mirror with an embedded super wide 7.3" Full HD 1080p compatible touchscreen display. Compatible with a wide range of cameras. The 3 camera inputs (rear/left/right) each have their own individual triggers (reverse gear or indicators). Access the menu via the touchscreen to set each camera's own individual settings.

Specifications

3 Camera inputs - 3 Triggers

7.3" HD Touchscreen

Camera Compatibility: Standard CVBS,

720p AHD, 960p AHD & 1080p AHD

Resolution: 1280 x 400

Video Format: NTSC & PAL (auto)

Automatic screen brightness

Individual camera setting:

brightness, contrast, colour, mirror image

Adjustable distance guide lines for each camera (vertical/horizontal positions and angles)

Power: 10-16v DC

Dimensions (mm)(WHD): 240 x 85 x 50

Rear View Mirror with 7.9" Full Coverage HD Touchscreen Monitor NSR-74AHD



OEM style rear view mirror with an embedded super wide 7.9" Full Coverage Full HD 1080p compatible touchscreen display. When active, the display covers the entire mirror. Designed with a slightly narrower width than a standard mirror to accommodate larger sun visors on vehicles such as the 70 Series Landcruiser. 4 camera inputs with 3 triggers (reverse gear and indicators), the 4th camera input can be used as an "always on" to use as a digital rear view display. Any two cameras can be displayed at once in split screen. Access the menu via the touchscreen to set each camera's own individual settings.

Specifications

4 Camera inputs - 3 Triggers

Split screen view of any 2 cameras

7.9" Full Coverage HD Touchscreen

Camera Compatibility: Standard CVBS,

720p AHD, 960p AHD & 1080p AHD

Resolution: 1280 x 370

Video Format: NTSC only

Automatic screen brightness

Individual camera setting:

brightness, contrast, colour, mirror image

Adjustable distance guide lines for each camera (vertical/horizontal positions and angles)

Power: 9-16v DC

Dimensions (mm)(WHD): 210 x 78 x 50

NESA®

Distributed throughout Australia by



Neltronics Australia Pty Ltd
273 Great Eastern Hwy,
Belmont WA 6104
Ph: 08 9383 7833
www.neltronics.com.au